



EMu Documentation

The ArcExplorer Report

Document Version 1.1

EMu Version 4.0.02



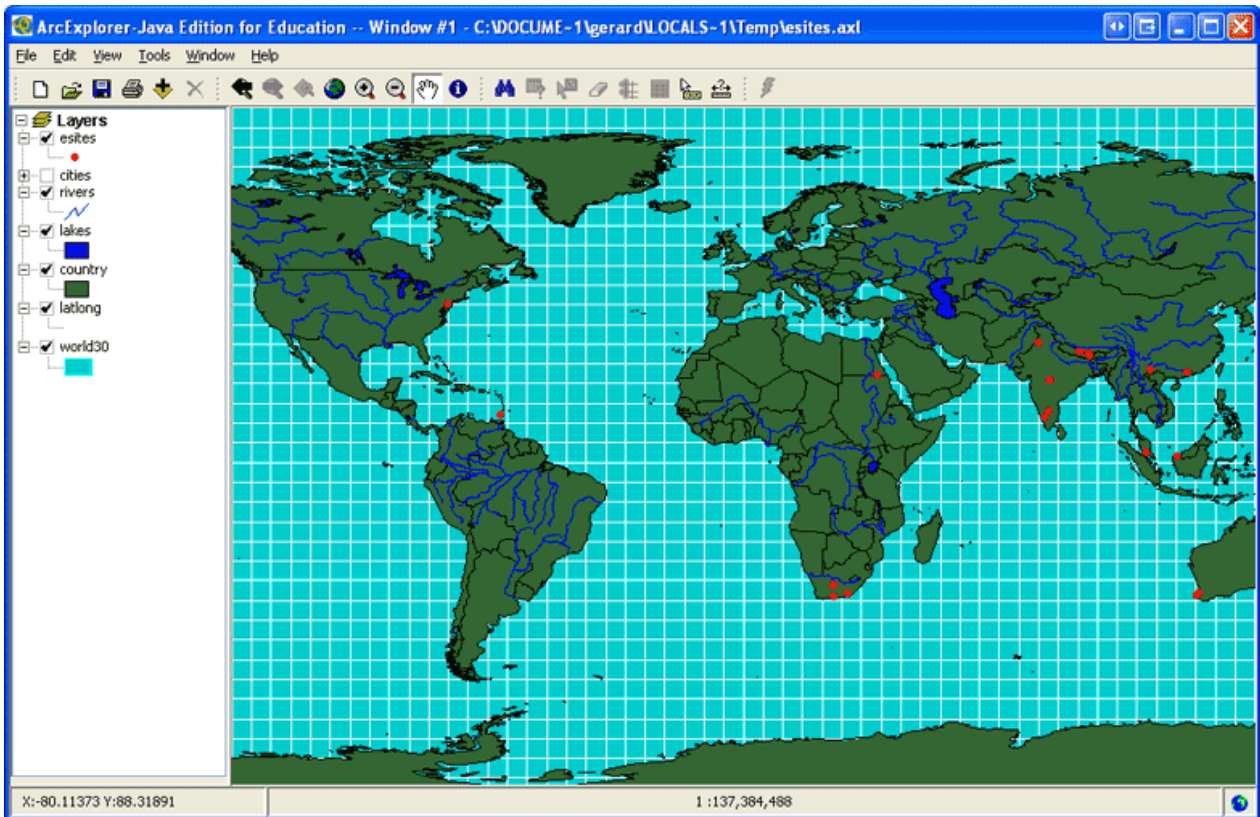
Contents

SECTION 1	The ArcExplorer Report	1
SECTION 2	How to set up EMu to run the ArcExplorer report	3
	Download and setup ArcExplorer on your computer	4
SECTION 3	How to run an ESRI ArcExplorer report in EMu	5
SECTION 4	How to make the ArcExplorer report	7
	Using an ArcExplorer AXL file	8
	Making a custom AXL file	14
	Index	15

SECTION 1

The ArcExplorer Report

The EMu ArcExplorer report takes EMu records with location (latitude / longitude) information and displays them on maps in the third party application, ArcExplorer:



ArcExplorer (<http://www.esri.com/software/arcexplorer/download.html>) is a freely available lightweight GIS data viewer that lets you perform a variety of basic GIS functions. With ArcExplorer, it is possible to:

- Display and query a variety of standard data sources, including:
 - ESRI shapefiles
 - ArcInfo coverages
 - Images
 - ArcIMS services
- Pan and zoom through multiple layers and identify, locate, and query geographic and attribute data.
- Symbolize your data based on attributes contained in your data layers to create

thematic maps.

- Perform basic spatial analysis tasks on the geographic data, such as selecting and buffering features.

SECTION 2

How to set up EMu to run the ArcExplorer report

Running the ArcExplorer report requires that:

1. You are using an EMu client built after March 2010.
2. Two ArcExplorer Registry entries are specified in the EMu Registry.
3. ArcExplorer is installed on your computer (page 4).

Download and setup ArcExplorer on your computer

In order to run ArcExplorer reports in EMu it is necessary that the ESRI ArcExplorer application is installed on your computer. The application can be freely downloaded from <http://www.esri.com/software/arcexplorer/download.html> (it is necessary to register with ESRI in order to download the installation file).



The ArcExplorer report does not work with ArcExplorer 9.3.1, so be sure to download **ArcExplorer 2.3.2 (Java Edition for Education)** or later.

Installation instructions and System Requirements are provided by ESRI (although it is a fairly straightforward installation).

Information on the usage and licensing of ArcExplorer can be found at <http://www.esri.com/software/arcexplorer/common-questions.html> and in the PDF installed along with the application.

SECTION 3

How to run an ESRI ArcExplorer report in EMu


Running an ArcExplorer report is similar to running any other report in EMu:

1. Search for or otherwise list a group of records in a module.
2. Select **Tools>Reports** in the module Menu bar


-OR-

Select **Reports**  in the Toolbar.

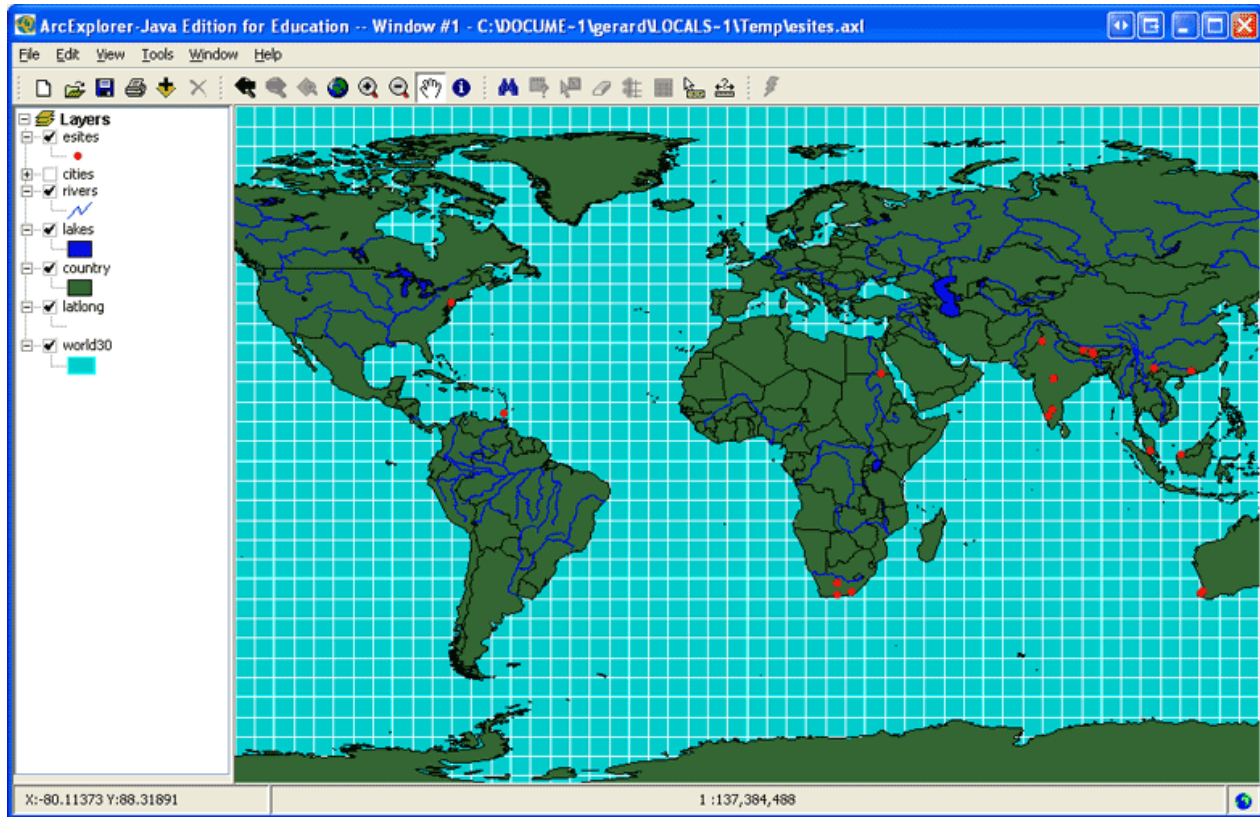
The Reports box displays with a list of pre-defined reports. The list includes the report name, its Type and the name of the owner of the report (who created it).

3. Select a report of Type **ArcExplorer**.
4. Select **Report**  to generate the report using the current record or selected records

-OR-

Select **Report All**  to generate the report using all listed records.

The ArcExplorer application will open with the data mapped:



With the data displayed in ArcExplorer, it can now be manipulated using the many tools available in the application.

SECTION 4

How to make the ArcExplorer report

In order to run an ArcExplorer report it is first necessary to design and create a report in EMu (page 8). This requires that you:

- Build or choose a map template.
Map templates can be created in ArcExplorer using the demo files provided as a starting point, or you can simply use any of the template maps provided with ArcExplorer. The end result is an AXL file.
- Create an ArcExplorer report in EMu and associate the AXL file with it.

Multiple reports can be designed, each using different map templates (e.g. plotting EMu records by ecological zones; or on a simple map of world boundaries, etc.).

When an ArcExplorer report is run in EMu, ArcExplorer opens with a map displaying the EMu data and any GIS layers that were specified in the template. Within ArcExplorer it is then possible to add GIS layers, query points and generally use the functionality of ArcExplorer to view the EMu records.

Using an ArcExplorer AXL file

ArcExplorer is loaded with a range of base templates. If the application was installed in the default location, these are stored in:

ESRI/AEJEE/Data/

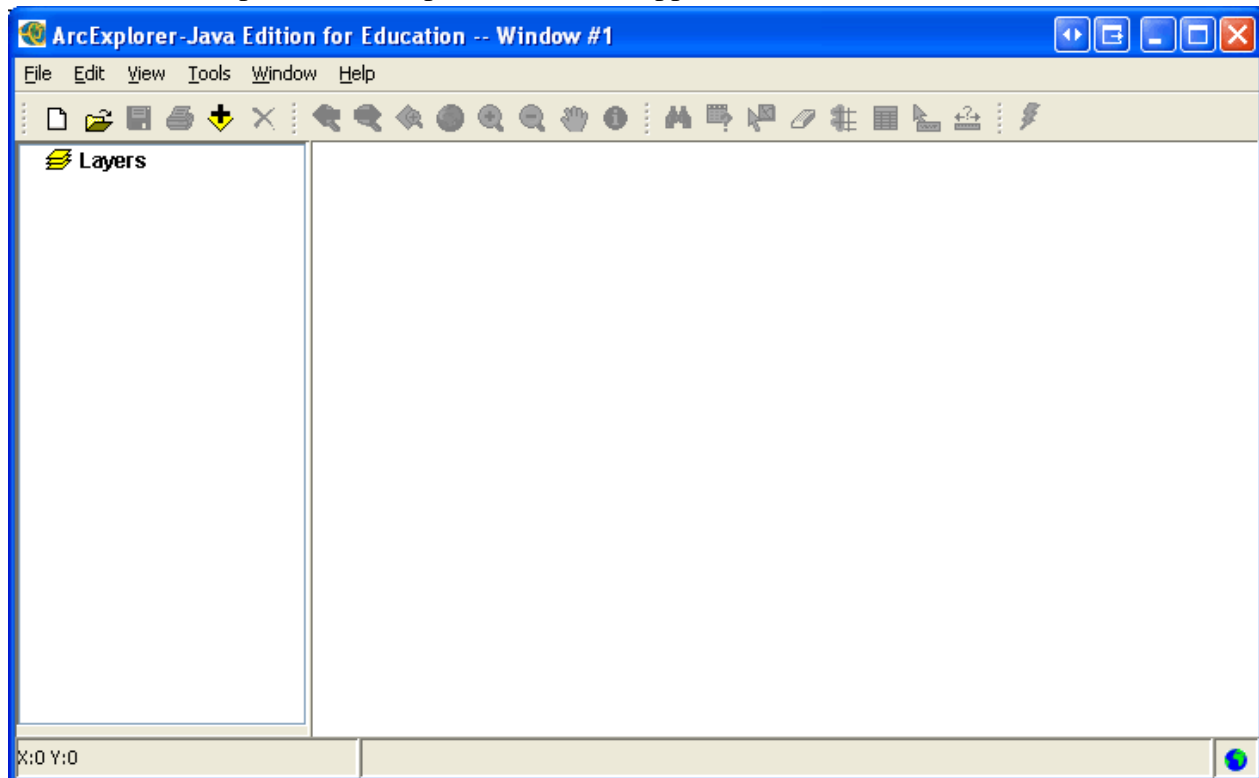
A good starting point is to load the `world_hd.axl` template.



If you use one of the demo AXL files supplied with ArcExplorer, it is necessary to open and save it first in ArcExplorer prior to adding it to a report for the first time. These demo AXL files are not *portable*, that is they must always be located in the one place on a user's PC. EMu requires them to be *portable*. A demo AXL file is made *portable* when it is opened in ArcExplorer and saved, either under its own name or a new name. For details of building your own template from scratch, see Making a custom AXL file (page 14).

To make an ArcExplorer report using a demo AXL file:

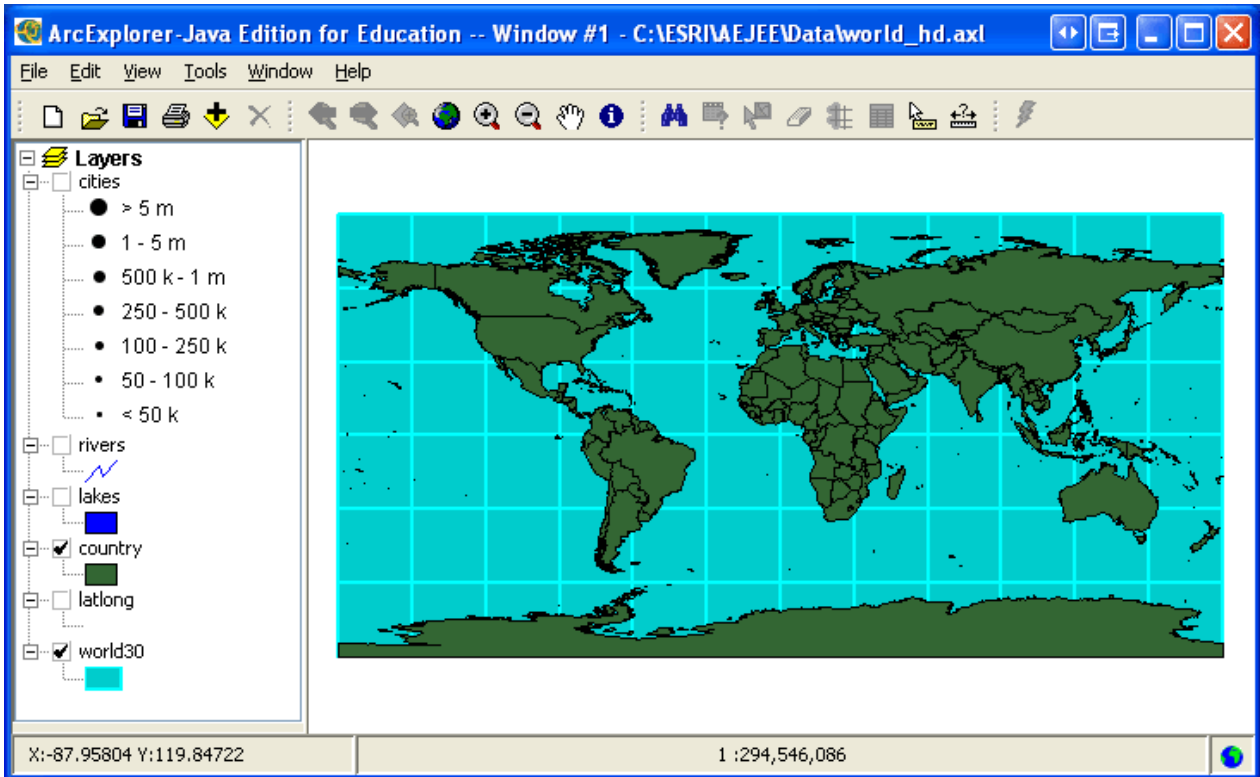
1. Open the ArcExplorer (**AEJEE**) application.



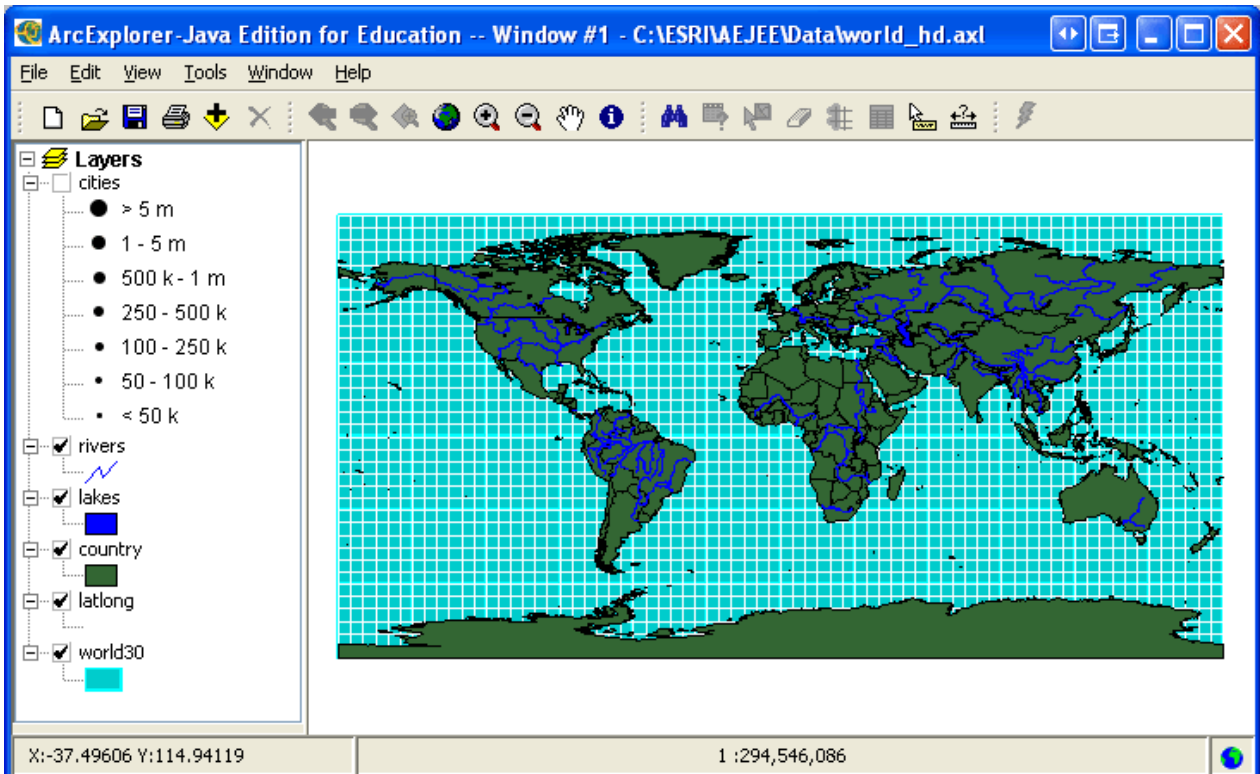
2. Open an AJEE template by selecting **File>Open**, navigate to ESRI/AJEE/Data and select the required AXL file.

In this example, `world_hd.axl` was selected.

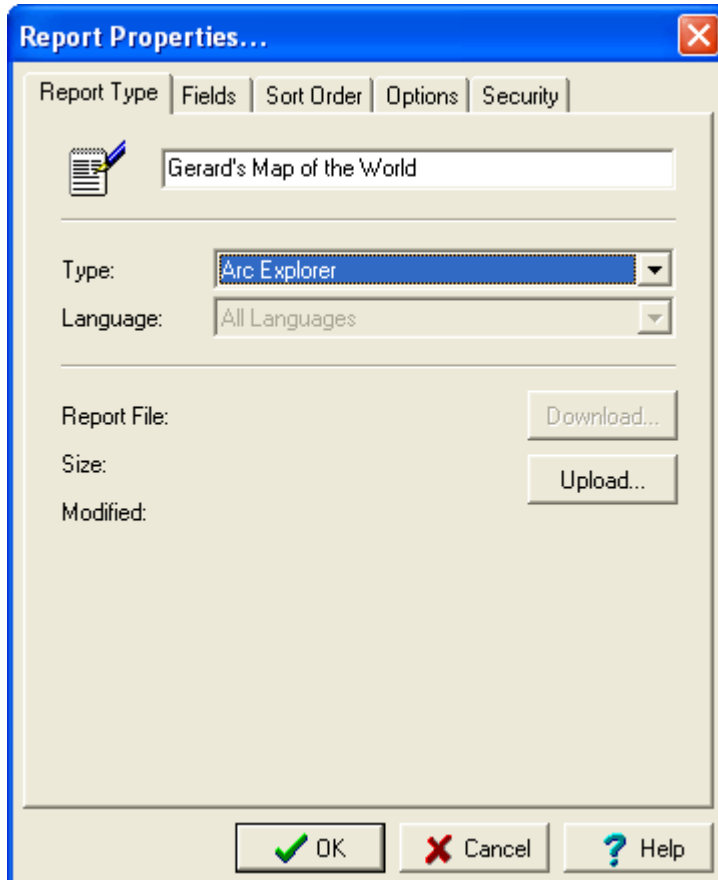
The template displays in ArcExplorer:

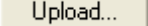


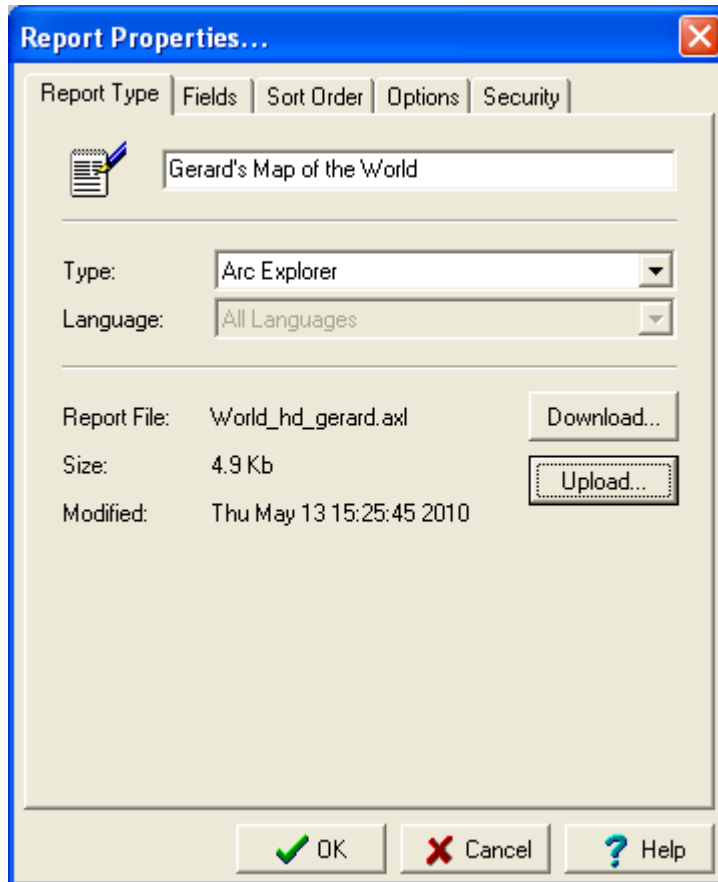
3. Modify the template as required, for example by adding layers:



4. Select **File>Save As** to save the template without over-writing the original template. Be sure to use a descriptive name.
5. In EMu, create a new report in the appropriate module.
In this example the report is created in the Sites module.
6. Give the report a descriptive name and select **Arc Explorer** from the Type drop list on the Report Type tab:



7. Select **Upload**  to upload your map template:



8. Select the **Fields** tab and add fields to the report.

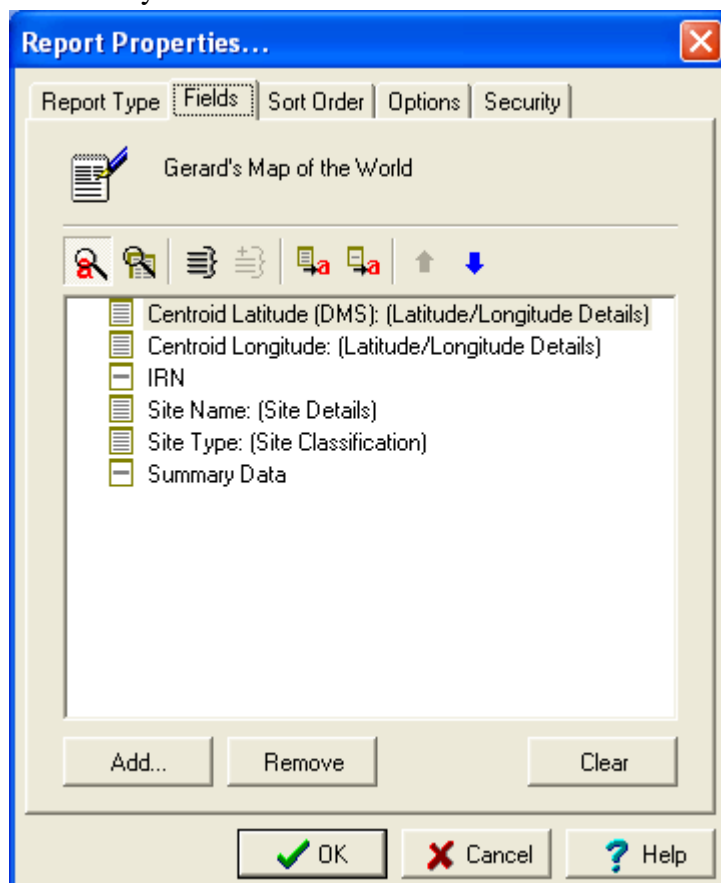


You must add one pair of Latitude / Longitude fields.

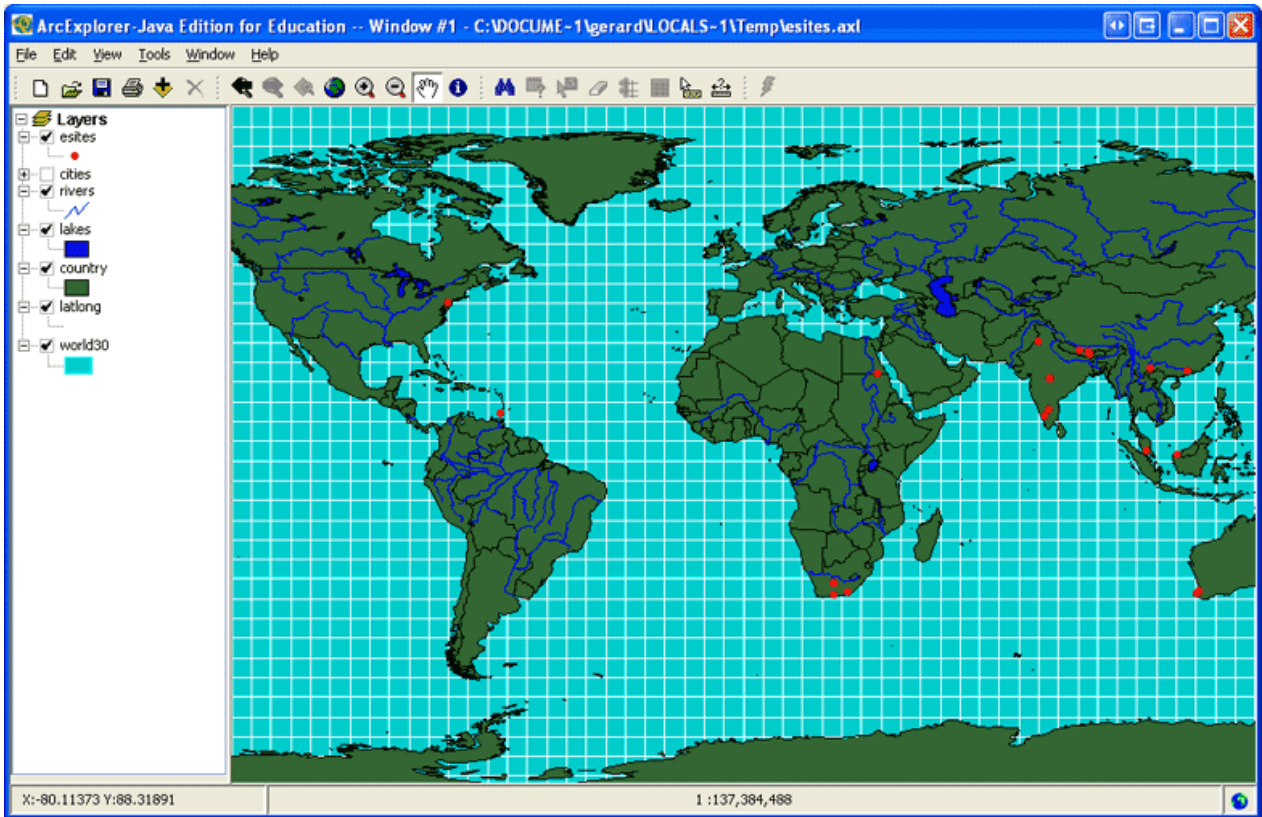
Other fields that would typically be added include:

- IRN
- SummaryData

- Family / Genus / Scientific Name


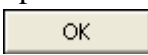


9. Save the report and run it (page 5):



Making a custom AXL file

ArcExplorer is provided with a wide range of shapefiles (layers) which you can use to build a template from the ground up.

1. Start a new session in ArcExplorer (**File>New**).
2. Begin adding shapefiles by clicking the **Add Data**  button in the Toolbar and navigating to `ESRI/AJEE/Data`.
3. From there, select one of the folders containing shapefile:
 - i. Select a shapefile.
 - ii. Click **OK**  to add it to your new template.
Add as many shapefiles as required.
4. Save the template with a descriptive name.
This generates an AXL file that can be used as the template for an EMu ArcExplorer report.

See Using an ArcExplorer AXL file (page 8) for details of building the EMu report.

Index

D

Download and setup ArcExplorer on your computer • 3, 4

H

How to make the ArcExplorer report • 7

How to run an ESRI ArcExplorer report in EMu • 5, 14

How to set up EMu to run the ArcExplorer report • 3

M

Making a custom AXL file • 8, 15

T

The ArcExplorer Report • 1

U

Using an ArcExplorer AXL file • 7, 8, 15